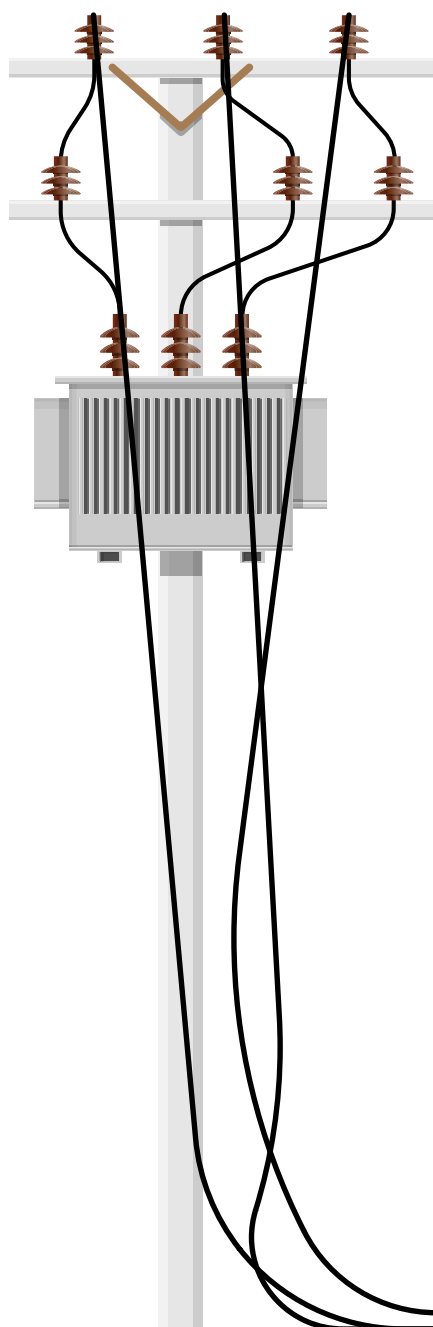




DOWNED POWER LINE SAFETY

ALWAYS ASSUME ANY DOWNED LINE IS LIVE AND DANGEROUS



- Stay at least **35 feet** away.
- **Call 911** to report immediately.
- If you are involved in a car accident with a utility pole or power line, **do not exit your vehicle.**
- **Do not drive over** downed lines.
- If you see someone who is in direct contact with a power line, **do not touch the person.**



*Information provided by the NJ Board of Public Utilities.