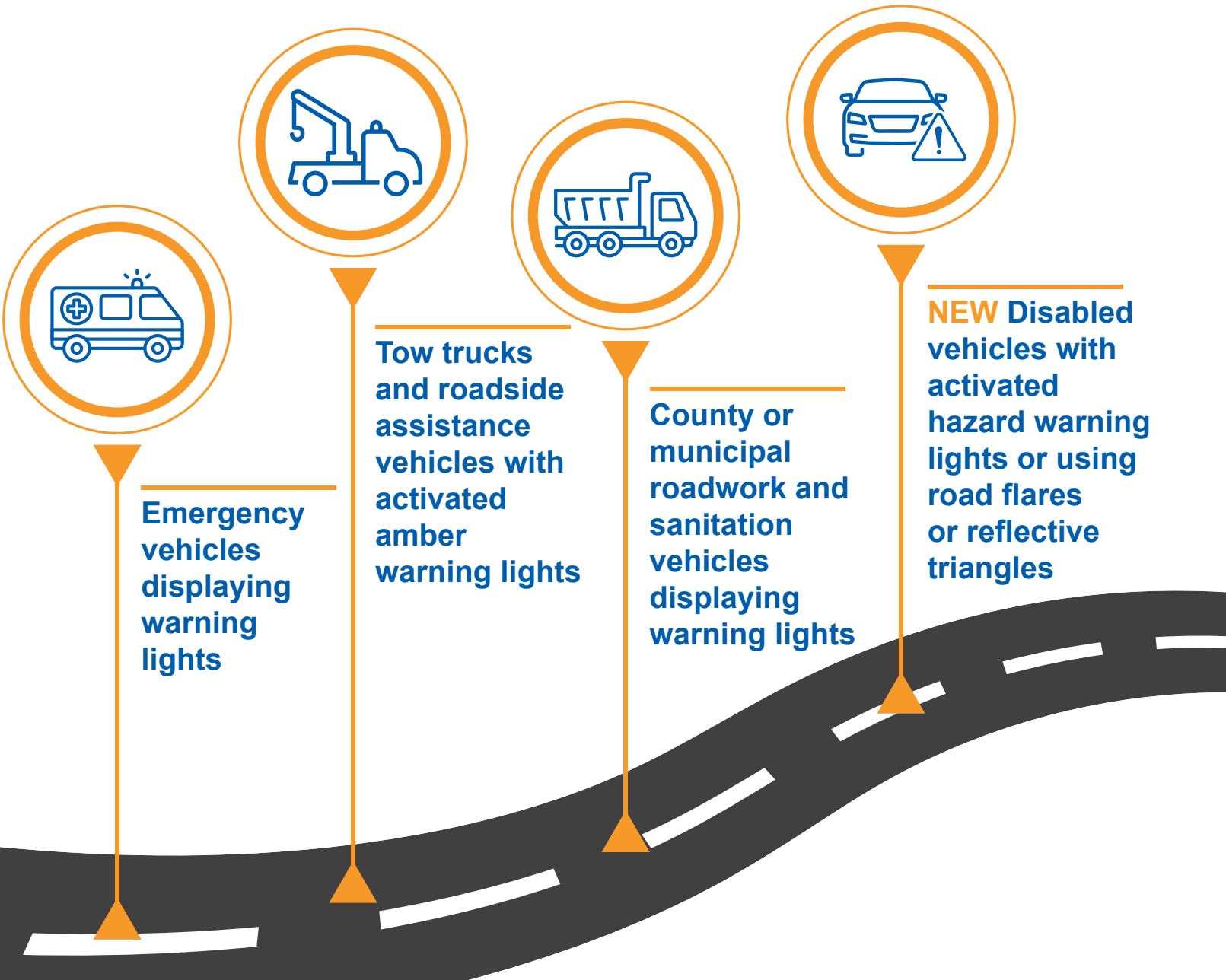




New Jersey MOVE OVER Law Extended

In January 2024, Governor Murphy extended **NJ MOVE OVER Law** to include disabled vehicles.



When approaching these vehicles, motorists must

- Move over to a not adjacent lane, if safe to do so
- If not safe, slow to a safe speed, but below the posted speed limit, and be prepared to stop
- Follow any directions given by a law enforcement officer